

-SILVER LAKE-  
DYNAMIC REVERB  
USER'S GUIDE



 Seymour  
Duncan®

Seymour Duncan

PRESETS



TONE  
8 9 10  
1 2

Phimmer  
Hall  
Room  
Gated  
Swell  
Delay verb  
REVERB TYPE  
Bank  
Save

THRESHOLD  
DYNAMIC EXPRESSION

Hard  
Soft  
Off  
Mix  
Mod  
Damp

SILVER

Seymour



2.8

DECA

DELAY

FUNCTION

GRIT

DAMP

TWEAK

REVERB

**SUPER LAKE**

Duncan

Mod Depth  
Mod Rate  
Hi Pass  
Lo Pass

MIX

On

Off

Trails

HOLD

KS

PRESETS



We'd like to thank you for making the Seymour Duncan Silver Lake Dynamic Reverb a part of your tone quest. In your hands is a powerful creative tool that combines classic reverb sounds with unique dynamic control for an inspiring musical experience.

## HOW IT WORKS

- 1 REVERB TYPE SELECTOR** – 8-way switch to select between reverb types. **Room** – Models the sound of smaller spaces. **Hall** – Models the ambience of a concert hall. **Plate** – Models the sound of metal plate reverb. **Spring** – Based on a vintage Spring Reverb Tank. **Shimmer** – Adds an octave up to the reverb. Grit will increase the amount of octave signal in this mode. **Gated** – Stops the reverb trail when you stop playing. **Swell** – The reverb will swell in volume as the input signal decays. **Delay/verb** – Adds a delay line to the reverb. Pre-Delay controls the delay time in this mode.
- 2 PRESET DISPLAY** – Indicates the currently loaded preset.
- 3 BANK BUTTON** – Press to cycle through the 32 preset banks.
- 4 PRESET BUTTON** – Press to cycle through the 4 presets (A/B/C/D) in the currently selected bank.  
**\*\*SAVE FUNCTION\*\*** Press both Bank and Preset buttons together to enter SAVE mode. Display will blink. Use Bank and Preset buttons to choose a save location then press both buttons together again to save the current UI state to the selected preset location.
- 5 DECAY KNOB** – Sets the time it takes for the reverb to decay. Turning the DECAY knob clockwise will give you larger room size and much longer reverb time.

- 6 **PRE-DELAY KNOB** – Controls the pre-delay (the amount of time between the initial note being played and when the reverb starts). 0mS - 500mS depending on the reverb type.
- 7 **FUNCTION KNOB** – Selects one of four parameters to be controlled with the TWEAK knob. **Mod Depth** – the Tweak knob will increase the depth of the Modulation. **Mod Rate** – the Tweak knob will increase the speed of the Modulation. **HiPass**– the Tweak knob will roll off low frequencies. **Lo Pass** - the Tweak knob will roll off high frequencies.
- 8 **THRESHOLD KNOB** – Knob to control the sensitivity of the Dynamic Expression feature. The LED will illuminate brighter when there is more of the selected parameter blended in, and dim when there is less.
- 9 **HARD/SOFT/OFF TOGGLE** – Toggles the Dynamic Expression between its two modes or turns it off. **HARD MODE** – Blends in more of the selected parameter (Mix, Damp, or Modulation) when you play harder. **SOFTMODE** – Blends in more of the selected parameter as you play softer.
- 10 **EXPRESSION ASSIGN BUTTON** – Selects the parameter that the Dynamic Expression feature controls.
- 11 **GRIT KNOB** – Adds soft clipping and 'grit' to the wet signal.
- 12 **DAMP KNOB** – Control to darken the sound of the wet signal. Adding damping lowers high-frequency response in the reverb.



- 13 **TWEAK KNOB** – Controls the amount of the parameter selected with the FUNCTION knob.
- 14 **MIX KNOB** – Determines balance of wet/dry signal. Fully clockwise = 100% wet. Fully counter-clockwise = 100% dry.
- 15 **TRAILS BUTTON** – When set to ON the reverb will continue to decay naturally when bypassed. (No new repeats will be generated). In this mode Silver Lake uses a buffered bypass. When set to OFF, the reverb will cut off as soon as the effect is bypassed. In this mode Silver Lake is true-bypass.
- 16 **BYPASS FOOTSWITCH** - Turns the reverb effect on and off.
- 17 **PRESET/BANK FOOTSWITCH** – Defaults to PRESET mode, tap the footswitch to scroll through the four presets in the current bank. To change to BANK mode press and hold the footswitch until the LED becomes solid, then tap the footswitch to scroll up through the 32 banks – press and hold the footswitch to scroll down. After 2 seconds with no input the mode will revert to PRESET.

## LET'S GET STARTED!

Your new Silver Lake Dynamic Reverb is fully featured out of the box (requires external 9V to 18V regulated DC adapter, center pin negative, 300mA current rating - not included), but you can access more utility and options by downloading the Librarian software at [www.seymourduncan.com/software](http://www.seymourduncan.com/software). These functions include:

**Firmware Updates** – We will periodically release firmware updates for Silver Lake to add more features or increase the usability. You can download and install these updates by connecting Silver Lake to your computer using a micro USB cable and running the Librarian software.

**Preset Management** – The Librarian software can be used to rename, backup, and restore your presets – or return to the factory settings.

MIDI – Silver Lake can be used with standard MIDI controllers. A complete list of MIDI commands is available at [www.seymourduncan.com/pedal/silverlake](http://www.seymourduncan.com/pedal/silverlake). By default, Silver Lake uses ANY MIDI channel, but you can select 1-16 in the librarian.

## SAMPLE SETTINGS



### 03A- Mod Room

Subtle modulation adds depth and interest to the basic room reverb sound.



### 03B- Ducked Hall

Using Dynamic Expression, this Hall reverb steps back in the mix when you play harder or busier parts, blooming into a more expansive sound when you play softly.



### 03C– Damped Plate

Dynamic Damping clamps down the brightness of this big, dirty plate reverb sound, increasing the range of applications.



### 03D– Dirty Spring

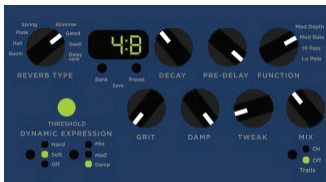
Adding grit and damping to the Spring reverb sound creates a pleasing Lo-Fi verb that adds moody ambience to your playing.



### 04A– Shimmer Delay

Adding Pre-Delay to the Shimmer reverb creates an Octave Up Delay effect - try playing single note runs for a cascade of shimmering repeats.





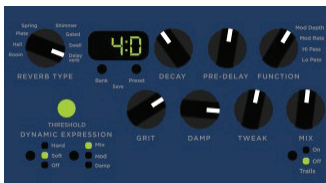
### 04B– Clamped Gate

Combining the gated reverb with Dynamic Damping creates a unique clamped sound with a short decay.



### 04C– Slowverb

The Swell reverb sound at 100% wet mix will remove the initial attack of your note, allowing you to play violin-like swells. Pre-Delay affects the time it takes to swell.



### 04D– Ambient Delay

Combining a soft delay line with the Hall reverb algorithm creates a swirling, swelling, blooming ambient patch. Your playing dynamics can be used to create dramatic changes in the amount of reverb 'wash'.



**Specifications:**

**Input Impedance:** 1M Ohm

**Output Impedance:** 100 Ohms

**Gain:** Unity

**Noise:** <-105dBV

**Frequency Response:** 20 Hz to 20 KHz +/-0.5dB

**Power:** External 9V to 18V regulated DC adapter (center pin negative) with 300mA current rating

**Current Consumption:** 150mA

**Dimensions:** 5.60"x5.13"x2.15"

**Weight:** 1.35 lbs.

## COMMITMENT TO QUALITY AND COMMUNITY

Seymour Duncan takes pride in designing and crafting our products to create the most amazing sound possible. Our Made in the USA label designates that the products are designed in Santa Barbara, California and manufactured in the USA with quality parts sourced in the United States and around the world.

With everything we create, our passion and obsession for amazing sound is reflected in its quality and reliability.



## LIMITED WARRANTY

Seymour Duncan offers the original purchaser a one-year limited warranty on both labor and materials from the day this product is purchased. We will repair or replace this product at our option if it fails due to faulty workmanship or materials during this period. Defective products can be returned to your USA dealer, international distributor, or sent direct to our factory postage prepaid along with dated proof of purchase (e.g., original store receipt) and RMA number. Call or email our factory for an RMA number which must be written on the outside of the box. We reserve the right to refuse boxes without an RMA written on the outside. As you might expect this warranty does not apply if you've modified the unit or treated it unkindly. We can assume no liability for any incidental or consequential damages which may result from the use of this product. Any warranties implied in fact or by law are limited to the duration of this express limited warranty.

## DISPOSAL GUIDELINES

In the unlikely event that you ever need to dispose of this product it must be disposed of properly by handing it over to a designated collection point for the recycling of waste electronic equipment. Please contact your local household waste disposal service or the shop where you purchased this product for those locations. Thanks for helping us conserve natural resources and ensure that it is recycled in a manner that protects human health and the environment.



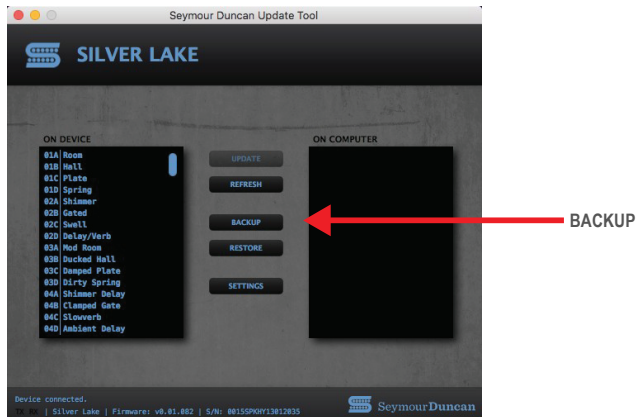
**DIGITAL PEDAL FIRMWARE RESET  
AND UPDATE PROCEDURES**



As with all digital pedals with Presets you can customize and save, we recommend you backup your Presets regularly, so they can be recalled in the event you need to reset the unit back to its factory default settings. This can be done using the **BACKUP** button in the Update Tool.

## MANUAL RESET TO FACTORY DEFAULT SETTINGS

If you have experienced a power interruption, or an unsuccessful firmware update that is causing your pedal to perform incorrectly, your pedal can be reset to the factory default settings by performing a manual reset.

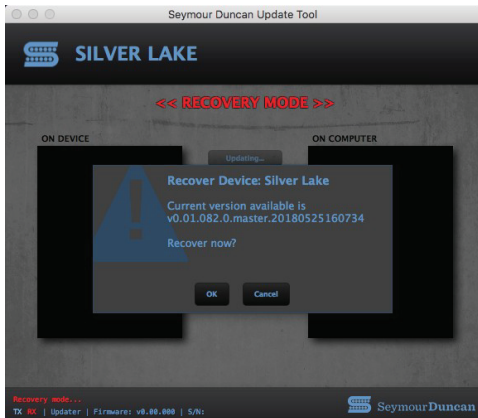


1. If you haven't already downloaded and installed the Update Tool from the Seymour Duncan website, go to <https://www.seymourduncan.com>, select the appropriate pedal and go to the **Software Updates** link to download and install the Update Tool. This will be needed to complete the reset process.
2. Make sure the unit is unplugged (**Power OFF**).
3. Use a bent paper clip or needle to access the micro switch located in the **small hole** above the MIDI IN jack.



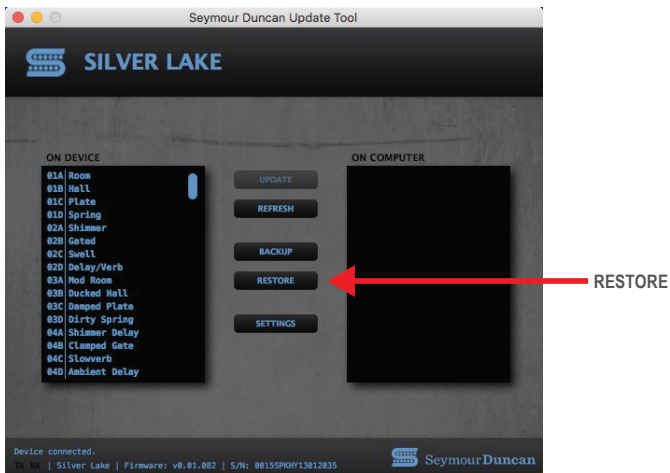
4. Press and hold the switch in while plugging in the power to the unit (**Power ON**) . Release the switch.
5. Launch the Update Tool and connect the USB jack on the pedal to a USB port on your computer.
6. The Updater Tool will go into **<< RECOVERY MODE >>**.

\*Updater tool will display the device currently connected.



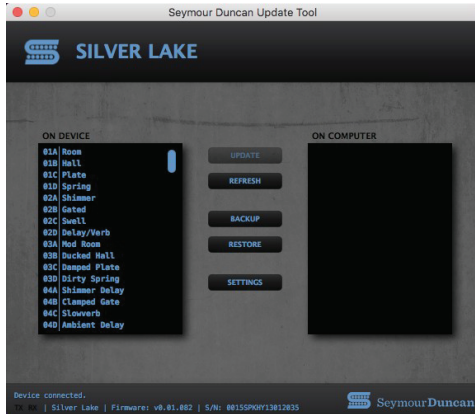


7. Follow the instructions on the Updater Tool to reprogram your pedal.
8. After successfully reprogramming your pedal, you can restore any Presets you have saved on your computer using the **RESTORE** button.



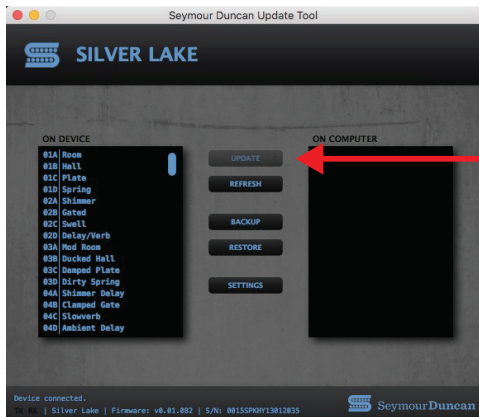
## **FIRMWARE UPDATING:**

- 1.** Go to the Seymour Duncan Website <https://www.seymourduncan.com/> and locate the device you want to update.
- 2.** Select the **Software Updates** link.
- 3.** After completing the information on this page, select **SUBMIT FOR DOWNLOAD** at the bottom of the page.
- 4.** Select the appropriate download platform (Windows or Mac).
- 5.** Follow the installation instructions to install the Update Tool on your computer.  
The file will be saved to the desktop (Windows) or applications folder (Mac).
- 6.** Launch the Update Tool. It will start scanning for devices.



**CURRENT FIRMWARE**

7. Power on your pedal and connect the USB jack on the pedal to your computer USB port.
8. The Update Tool will locate your pedal and change its display accordingly, showing the currently installed firmware version and S/N of the pedal. The **current firmware** version will be displayed in the lower left corner of the update tool.



UPDATE

9. If the **UPDATE** button is lit, there is a newer version of firmware available for your pedal. If it is not lit, your unit has the latest firmware installed in it already.
10. Press the **UPDATE** button and follow the instructions to install the new firmware.
11. The new firmware version will be displayed in the lower left corner of the update tool.

## MIDI CONTROLLER COMMANDS:

CC#	HEX	Program Change	Value Range
0	00h	Bank	0-31
3	03h	Pre-delay	0-127
9	09h	Decay/RT-60	0-127
14	0Eh	Mix	0-127
15	0Fh	Coloration	0-127
17	11h	Tweak Rate/LFO Freq	0-127
18	12h	Tweak Depth	0-127
19	13h	Reverb Type	0-7
23	17h	Saturation	0-127
25	19h	Dynamics Threshold	0-127
26	1Ah	Dynamics Type	0-2
27	1Bh	Dynamics Dest	0-2
28	1Ch	Tweak LPF	0-127
29	1Dh	Tweak HPF	0-127
32	20h	Preset	0-3
33	21h	Patch Dec	~
34	22h	Patch Inc	~
97	61h	Trails	0-1
102	66h	Bypass	0-1



Hall  
 Room  
 Shimmer  
 Gateal  
 Swell  
 Delay  
 verb

REVERB TYPE



THRESHOLD  
 DYNAMIC EXPRESSION  
 Hard  
 Soft  
 Off



Mix  
 Mod  
 Damp

GRIT



DYNAMIC REVERB  
**SILVER LAKE**



Seymour Duncan

# WHAT WE STAND FOR

We stand for great tone:  
It's the heart.  
The soul. The essence.  
The core of the sound.

We stand for musicians.  
Because soul matters.  
Spirit matters.  
Music matters.

We stand for quality.  
We're an American original.  
An industry leader.  
And we're always innovating.

We stand by our work.  
Our passion. Our history.  
It's in everything we build.  
In everything we touch.

We stand for great tone.  
Music. Power. Heart. Soul. Tone.  
It's who we are. It's what we do.  
We are Seymour Duncan.

 Seymour  
Duncan

REAL SOUL.  
Genuine TONE.

**seymourduncan.com**  
5427 Hollister Ave  
SantaBarbara,CA93111  
(805)964-9610

© 2018 Seymour Duncan. All Rights Reserved.

revC